

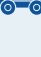


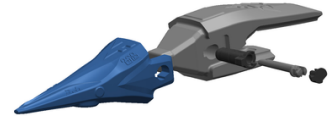


SUCCESS STORY - CONSTRUCTION

TURNKEY® Grizzly

5 x T8 1545-10° PE

 Indonesia
 Extraction of gold
 HITACHI ZX 300

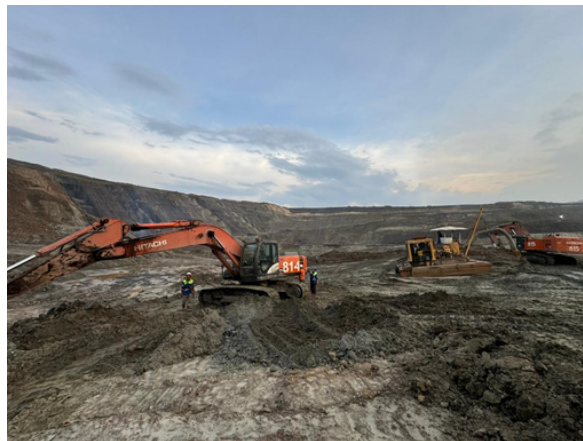


CUSTOMER'S OBJECTIVES

In Indonesia, many operators work close to housing and cannot use explosives.

Our customers, who had previously been using various competing systems, were looking for the ideal solution:

- An ultra-penetrating tooth to attack the material without explosives.
- A resistant, self-sharpening tooth for longer life.
- Simple, economical locking system to save time and reduce costs.



“ RESULTS

Thanks to the optimised shape of the PE tooth, our customers benefit from better penetration, excellent resistance and, above all, permanent self-sharpening throughout the tooth's service life.

The sharpened profile of the adapters is particularly popular, as it facilitates the penetration of the bucket into materials.

Finally, assembly and disassembly the teeth is quick and easy thanks to an easy-to-use locking system. The lifetime of the adapters is also increased.

